

Upcoming Deadlines

NOVEMBER 1, 2009

By-Laws.....Mark Kidd

JANUARY 31, 2010

Report on Rituals.....Neal Edman

Diamond Article.....Barbara Ross

Mid-Year Status Report.....Ron Wolfe

MAY 1, 2010

Scholarship Application.....Mark Shotwell

JUNE 1, 2010

President's Report.....Ron Wolfe

Treasurer's Report, Advisor's Report,

National Dues (\$40/member), Convention Assessment (\$300),

Scholarship Donation (Minimum Donation \$50 for Honor Chapter Status)

Initiate List (word document sent electronically)

All reports and *The Diamond* article are to be submitted electronically.

Reports are located on the website. ♦

Lambda Sigma Chapter Roster

Alpha	University of Pittsburgh	Pittsburgh, PA
Beta	Miami University	Oxford, OH
Epsilon	Allegheny College	Meadville, PA
Zeta	Muskingum College	New Concord, OH
Eta	Carnegie Mellon University	Pittsburgh, PA
Iota	University of Mississippi	University, MS
Lambda	Westminster College	New Wilmington, PA
Omicron	Northern Illinois University	DeKalb, IL
Pi	Auburn University	Auburn University, AL
Rho	Thiel College	Greenville, PA
Tau	University of Kansas	Lawrence, KS
Chi	Louisiana Tech University	Ruston, LA
Psi	University of Central Missouri	Warrensburg, MO
Omega	Pittsburg State University	Pittsburg, KS
Alpha Gamma	Duquesne University	Pittsburgh, PA
Alpha Delta	University of Southern Mississippi	Hattiesburg, MS
Alpha Epsilon	Mansfield University	Mansfield, PA
Alpha Zeta	Texas A & M University	College Station, TX
Alpha Eta	Penn State Erie – The Behrend College	Erie, PA
Alpha Theta	Slippery Rock University	Slippery Rock, PA
Alpha Iota	Mississippi State University	Mississippi State, MS
Alpha Kappa	Georgia Institute of Technology	Atlanta, GA
Alpha Lambda	D'Youville College	Buffalo, NY
Alpha Mu	Berry College	Mt. Berry, GA
Alpha Pi	Lawrence University	Appleton, WI
Alpha Sigma	Gannon University	Erie, PA
Alpha Tau	University of Alabama	Tuscaloosa, AL
Alpha Phi	Ferrum College	Ferrum, VA
Alpha Psi	University of Toledo	Toledo, OH
Alpha Omega	Westfield State College	Westfield, MA
Beta Gamma	Pikeville College	Pikeville, KY
Beta Delta	Middle Tennessee State University	Murfreesboro, TN
Beta Epsilon	Washington University	St. Louis, MO
Beta Zeta	Pace University – NYC Campus	New York, NY
Beta Eta	Pace University – Pleasantville	Pleasantville, NY
Beta Theta	Urbana University	Urbana, OH
Beta Kappa	George Mason University	Fairfax, VA
Beta Iota	Texas A & M University – Kingsville	Kingsville, TX
Beta Lambda	University of North Carolina – Pembroke	Pembroke, NC

National Address Directory

NATIONAL PRESIDENT

Jane Price Harmon

126 Seventeenth Street

Atlanta, GA 30309

(404) 892-2491 – home

(678) 772-8094 – cell

harmon.jane@paideiaschool.org

Corresponding Chapters: Beta, Iota,

Alpha Zeta, Alpha Iota, Alpha Mu,

Alpha Sigma

VICE PRESIDENT

John Hauser

Thiel College

58 Eagle St.

Greenville, PA 16125

(724) 588-2474 – home

(724) 456-4066 – cell

jhauser@thiel.edu

Corresponding Chapters: Chi, Alpha

Delta, Alpha Pi, Alpha Omega, Beta

Gamma, Beta Zeta

RECORDING SECRETARY

Denise Rode

Northern Illinois University

Orientation & First Year Experience

023 Holmes Student Center

DeKalb, IL 60115

(815) 753-6781 – office

(815) 751-8256 – cell

(815) 753-7480 – fax

drode@niu.edu

Corresponding Chapters: Tau, Alpha

Epsilon, Beta Iota, Beta Lambda

EXECUTIVE SECRETARY

Ron G. Wolfe

108 Westside Dr.

Richmond, KY 40475

(859) 623-5088 – home

Ex_sec@yahoo.com

Corresponding Chapter: Beta Delta

TREASURER/CONVENTION

LIAISON

Linda Fuerst

Lawrence University

Alumni Volunteer Coordinator

P.O. Box 599

Appleton, WI 54911

linda.m.fuerst@lawrence.edu

(920) 832-6853 – office

(920) 731-8937 – home

(920) 475-8067 – cell

(920) 832-6896 – fax

Corresponding Chapters: Lambda, Pi,

Omega, Alpha Eta, Alpha Phi, Alpha

Psi, Beta Theta

EDITOR

Barbara Ross

118 College Dr. # 5067

Hattiesburg, MS 39406-0001

(601) 266-4396 - office

(601) 297-5947 – cell

(601) 266-5870 – fax

Barbara.Ross@usm.edu

ADVISORS

Mark Shotwell – Scholarships

Slippery Rock University

Department of Biology

Slippery Rock, PA 16057-1326

mark.shotwell@sru.edu

(724) 738-2476 – office

(724) 421-8012 – home

(724) 372-3082 – cell

(724) 738-4782 – fax

Corresponding Chapter: Zeta, Eta,

Omicron, Alpha Gamma, Beta Epsilon,

Beta Kappa

Neal Edman – Rituals

Vice President and Dean of Student Affairs

Westminster College

Market Street

New Wilmington, PA 16172

(724) 946-7110 - office

(724) 946-6140 - fax

NEDMAN@WESTMINSTER.EDU

Corresponding Chapters: Alpha, Rho,

Alpha Theta, Alpha Lambda, Alpha Tau

Mark Kidd – Bylaws

George Mason University

Associate Dean, University Life

4400 University Dr., MS 6C9

Fairfax, VA 20122

(703) 993-4070 – office

(703) 867-2706 – cell

(703) 993-9528 – fax

mkidd1@gmu.edu

Corresponding Chapters: Epsilon, Psi,

Alpha Kappa, Beta Eta

STUDENT REPRESENTATIVES

Logan Matthews

221 Armstrong St.

Apt. 3207

Auburn, AL 36830

(256) 653-6711

Ltm0002@auburn.edu

Justin Larsen

364 C Douglas Hall

Northern Illinois University

DeKalb, IL 60115

(815) 739-5204

jgl2990@hotmail.com



Website:

<http://www.lambdasigma.org>

Distribution Lists:

LSPresidents@yahoogroups.com

LSAdvisors@yahoogroups.com



The Diamond

A publication of Lambda Sigma National Sophomore Honor Society

President's Message

A Wonderful Weekend in Pittsburgh Thanks to *Eta* Chapter!



Jane Price Harmon
National President

Flying into the city located on three rivers was a special treat for those of us coming in from the South. The fields were verdant and the trees filled with color. We are just entering fall in Atlanta, and our trees have only tinges of color on them.

Carnegie Mellon University provided a great atmosphere in which to exchange ideas about Lambda Sigma and to learn about the scope and workings of the national organization. Please use your magnet which will remind you of important dates for filing reports to national. Check the web for all honor chapter requirements, and be sure and contribute generously to the national scholarship fund. The national board awards five \$500.00 scholarships annually, and those selections are made from applications which each chapter submits in the spring.

For presidents your national board correspondent is a huge resource who will be thrilled to answer your questions as you lead your group through the year. We are all anxious to help when you need us!

We are delighted to welcome two new members, Mark Kidd from George Mason University, who will be responsible for bylaws, and our new student representative, Justin Larsen from *Omicron* chapter, Northern Illinois University. Justin will join Logan Matthews, our other student representative. Our student representatives are an integral and valued part of our board.

Again, kudos to Amanda, Jamie and Michael from *Eta* chapter for a fabulous Presidents' Conference. You have set the bar high for next year's host chapter! ♦

Beta Lambda Chapter Installed at UNC-Pembroke Campus

The installation of the *Beta Lambda* chapter was held on October 5, 2009, on the University of North Carolina – Pembroke Campus. John Hauser, national vice president of Lambda Sigma, conducted the installation and initiation of the 17 new members. Parents, grandparents, and friends were in attendance for the installation and initiation. The idea for a Lambda Sigma chapter stemmed out of an initiative on campus to focus more on sophomore academic needs. Along with academic advising and programming, the installation of a Lambda Sigma chapter became a priority. Doug Smith, a member from the class of the 2000 *Alpha Eta* chapter and currently working at UNC-Pembroke, serves as the advisor. ♦



Beta Lambda Installed (left to right) Nicholas Locklear, Brittany Dupree, Benjamin Mitchell, Megan Garris, Katie Jimison (secretary), Daisy Irra, Krisha Skye Beasley (treasurer), Brittney Galbreath (president), Jasmine Robinson (vice president), Meghan Brady, John Ethan Freeman, Deneka Sampson, Jasmyn Riggins, Shannon Hand, Kimberly Brewington, and Doug Smith (advisor). Not pictured – Chelsey Witter and Troy Cotten.

INSIDE THIS ISSUE

**Congratulations –
Lambda Sigma
Honor Chapters**
page 2

Gift of Honor
page 2

**Ruth Knight Outstanding
Advisor Award**
page 2

**New Awards
Announced at
Presidents' Conference**
page 3

**Scholarship Donation
Challenge**
page 3

**Chapter Presidents
Convene in PA**
page 4

**National Scholarship
Recipients**
page 5

Chapter News
page 7

**Upcoming Deadlines
Chapter Roster
National Directory**
page 14

Congratulations – Lambda Sigma Honor Chapters

Honor chapters are selected by the national executive board for excellence and achievement. Requirements these chapters must fulfill to be considered include: completion of annual reports by the president, treasurer, and advisor; completion of all rituals in accordance with chapter and national guidelines; correspondence with board correspondents; submission of an article to at least one issue of *The Diamond*; evidence of campus and community service, minimum contribution of at least \$50.00 to the national scholarship fund; approved bylaws on file with national, and attendance at the Presidents' Conference.

Congratulations to the following chapters on receiving this high honor!

Alpha	University of Pittsburgh
Epsilon	Allegheny College
Eta	Carnegie Mellon University
Lambda	Westminster College
Omicron	Northern Illinois University
Pi	Auburn University
Rho	Thiel College
Tau	University of Kansas
Omega	Pittsburg State University
Alpha Gamma	Duquesne University
Alpha Delta	University of Southern Mississippi
Alpha Zeta	Texas A & M University
Alpha Eta	Penn State Erie – The Behrend College
Alpha Theta	Slippery Rock University
Alpha Iota	Mississippi State University
Alpha Lambda	D'Youville College
Alpha Mu	Berry College
Alpha Pi	Lawrence University
Alpha Sigma	Gannon University
Alpha Tau	University of Alabama
Beta Gamma	Pikeville College
Beta Zeta	Pace University – NYC Campus
Beta Eta	Pace University – Pleasantville Campus
Beta Kappa	George Mason University ◆

Gift of Honor

This year's recipient for the Ruth Knight Outstanding Advisor Award, Kathy Fischer, served as an advisor to *Omega* chapter from 1987 until she retired in 2009. During this time the chapter was consistently recognized as an honor chapter. This is the highest honor bestowed upon our chapters. Not only did Fischer serve the chapter well, but she also served on the national board for 5 years. After receiving a bachelor's degree from Empire State College in New York, she then pursued a master's degree from Pittsburg State University. She also did graduate work at the University of Arkansas. Fischer taught history at PSU, first on a part time basis and then as a full time professor, until she retired in 2009. Fischer will be missed by the students she taught and advised for so many years. ◆



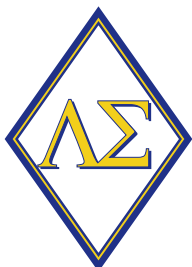
Kathy Fischer

Ruth Knight Outstanding Advisor Award

This year's recipient for the Ruth Knight Outstanding Advisor Award, Wendy Dahlgren, has been an advisor to *Alpha Mu* chapter of Lambda Sigma since July 2006. During this time the chapter has consistently been recognized as an honor chapter, the highest honor bestowed upon our chapters. After receiving an undergraduate degree in communications from Berry College, Dahlgren began her career as an admissions counselor at her alma mater. Currently she serves as associate director of admissions. Professionally, Dahlgren is a member of the Southern Association for College Admissions Counseling, Georgia PROBE Counselor Workshop and several campus committees. ◆

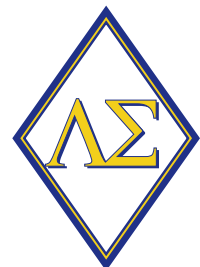


Wendy Dahlgren



LAMBDA SIGMA SOCIETY MISSION STATEMENT

Lambda Sigma Society, a national honor society for second year students, is dedicated to the purpose of fostering leadership, scholarship, fellowship and service among its members as they promote the interests of the colleges and universities they represent. ◆



the horizon, the *Beta Eta* chapter will continue to take long and triumphant strides in our systematic sprint towards success!

Emmanuel G. Ramirez
Editor

Beta Theta **Urbana University**

The *Beta Theta* chapter of Lambda Sigma has started the year great! We are one of the newer chapters, and as a group we have decided to try a number of different service projects and fundraisers to expand the awareness of Lambda Sigma on campus.

First, the chapter decided we would carry on the tradition of our final exam packet fundraiser, where parents can purchase an exam packet and send it to their child. We know what a stressful time finals can be and the late nights students have. Therefore, we plan to pack bags of different items one may need for a study night. We also put in many different fun items to relieve stress, like frisbees.

Also, at Urbana University we hold an event for Relay for Life. The *Beta Theta* chapter has decided to host a Relay team and participate in this event to help fight cancer.

Another event we have planned is to visit the local elementary schools to become mentors for the children while raising the awareness of Lambda Sigma. We hope to create a relationship through writing letters to the children and setting a good example for college students.

Beta Theta is dedicated to growing stronger each year. We plan to continue to reach out to our campus and community with a variety of projects. We are excited about the year and what we hope to achieve.

Casie Kerr
Editor/Secretary

Beta Kappa **Honor Chapter** **George Mason University**

The members of this year's chapter are motivated to not only meet higher goals, but to set new ones. The four pillars on which our chapter stands to exemplify: leadership, fellowship, scholarship, and service are all integral components in being able to do so. Striving to achieve a higher standard will be challenging due to the efforts of the chapter before us, but the members of this chapter anxiously accept the challenge. Being a part of this society is more than just a bullet point on a resume that references academic success, but it is the acceptance of pursuing a better community in which we live. Aristotle once said "with regard to excellence, it is not enough to know, but we must try to have and use it." The goal this chapter has set is to reach that excellence through action and service, and not simply live by the idea of it.

The members will rise to the challenge of exemplifying service through activities in the fall semester. During Thanksgiving the group plans to participate in a can drive to provide food to families that need help during the holiday. To make a more direct impact we will also organize baskets containing canned goods and other items for each family. We aim to provide each family with an additional gift, such as a gift card, to make their holiday more festive and enjoyable. The second service activity will be to help children in the Fairfax area through the donation of money for holiday gifts and toys. Once again, the chapter will target individual families by creating and organizing baskets of gifts for children of families in need of help during the holiday season.

The dedication and motivation in the fall semester is apparent for the spring semester as well. Members are already planning numerous activities for the spring, which includes volunteering with disabled children at the HSC Pediatric Center in Washington, D.C. and volunteering at a home for the elderly.

The *Beta Kappa* chapter aims to



Jane Harmon presenting honor chapter certificate to Addison Brown and Mark Kidd.

accomplish all of these goals and more in a comfortable and supportive environment where we all share the common bond of wanting to improve our community. The *Beta Kappa* chapter has made its mission to not only exemplify the four pillars, but to do so as role models while bringing about positive change.

Addison Brown
President ◆

Honor Cords **Available**

Many chapters are now providing honor cords for their graduating seniors to be worn at graduation. If you are interested in ordering these blue and gold cords, you may do so by contacting the following company: Schoen Trimming and Cord Co. Inc., 151 West 25th St., New York, NY 10001, or contacting them at (212) 255-3949. ◆

Professor of the **Month Mugs** **Available**

Blue Ceramic mugs with the greek letters Lambda Sigma and "Excellence in Teaching" all in gold letters are available for \$5 each. Contact John Hauser, national vice president, to place your order. His contact information is listed on the last page of this newsletter. ◆

breast cancer awareness, Operation Christmas Child Shoeboxes, and the Folk Life Festival with the local Lion's Club helping them to prepare chili.

During the fall semester it was important that the members make a difference in the Ferrum community as well as the college campus. They were involved in many service projects on and off campus. Each member helped to continue the traditions of Lambda Sigma by promoting and leading by example as good leaders and service providers.

Mallory Taylor
President

Alpha Psi **University of Toledo**

The *Alpha Psi* chapter at The University of Toledo aspires to grow in strength and numbers. With historically low membership and activity, the chapter seeks to intensify the definition of what it means to be a part of Lambda Sigma. Immediately following the start of the academic year, the members of the chapter enthusiastically began participating in community service activities, choosing to participate in a benefit walk for the Sunshine Children's Home, which houses disabled children. The group's latest decision allowed them to realize the power of collaboration, as they partnered with the Resident Student Association to create a safe trick-or-treating environment for inner city children in the annual event of Halloween Walk. Activities were set up with residence halls to entertain the children as they entered. Though *Alpha Psi* is a small chapter, its members have the spirit and energy of a large group. To add to that energy, the chapter will be holding a membership drive to increase the size of the chapter, making it as strong as possible. President Heather Griffin's initiative to take charge and bring undying enthusiasm to the group has driven all members to wholeheartedly seek excellence.

Stephanie Gurgol
Co-Chair of Membership

Beta Eta **Honor Chapter** **Pace University –** **Pleasantville**

The *Beta Eta* chapter, located on the Pleasantville campus of Pace University, has hit the ground not only running, but in a thoroughgoing sprint. With our members wholeheartedly involved in an honor society advocating civic engagement and promoting opportunistic affairs, the *Beta Eta* chapter has savored the sweet and ceaseless taste of success!

To commence with the fall semester for the 2009-2010 academic school year, Pace University hosts an event titled The Sophomore Kickoff. As an honor society strictly for sophomores, the *Beta Eta* chapter facilitates the arrangement of events held throughout the longevity of the semester following The Sophomore Kickoff, titled The Sophomore Scoop Series. In holding these numerous events each Wednesday, students are given the opportunity to assist in various community-based activities, as well as attend services regarding school-related issues.

Giving back to the community by means of providing aid to underprivileged children illustrates the whole-hearted qualities of the Lambda Sigma *Beta Eta* members. In September, our first event, titled Engage-licious: The Center for Community Outreach and Project Pericles Community Outreach, took place and had a more than satisfying outcome. Assembling homework kits for grammar school students made the sun shine a little brighter at Pace University that day. In the homework kits, we included items such as pencils, erasers, markers, stickers, crayons, glue, and individualized inspirational messages. Looking at the smiles on all of the children's faces after they received these gifts generated an incalculable feeling of bounteousness inside.

In another effort to give back to the community, the *Beta Eta* chapter of Lambda Sigma partook in a furniture warehouse drive. During this event,



members who volunteered their free time drove out to a park in New Rochelle and provided assistance by collecting and reassembling a great deal of donated furniture for those in need. But it does not stop there! The *Beta Eta* chapter has also held an exceedingly successful fundraiser within the University where lots of delicious baked goods were sold. In good spirit and acknowledgement that there are others in the world less fortunate than us, the *Beta Eta* chapter donated 75% of the proceeds to the St. Jude's Children's Hospital for kids suffering from cancer. We will continue to donate major portions of our fundraising proceeds to various other good causes!

Acknowledging resourcefulness as one of our main goals, the rest of The Sophomore Scoop Series events have been, and will be, presented with the same theme. Events such as Pace Tutoring & Writing, Your Career Starts Here! Co-op and Career Services, See the World: Study Abroad, Check Up From the Neck Up Counseling Center, and many more all provide the student body with a variety of routes to find solutions to questions plaguing the college community: *Beta Eta* is glad to advocate a system working towards the growth and advancement of Pace University's students. All of this only scratches the surface of the many great things the members of our chapter have already accomplished, and will continue to accomplish!

Saying that the *Beta Eta* chapter from Lambda Sigma is a great asset to Pace University would be an understatement. However, one thing is for certain, we do not give Lambda Sigma a great name on the strength of only one chapter, and for that, we express an immense amount of gratitude towards all of our fellow chapters. With plenty more events on

New Awards Announced at Presidents' Conference

Two newly created awards, **Outstanding Chapter** and **Most Improved Chapter**, were presented for the first time at the 2009 Presidents' Conference. The Most Outstanding Chapter award was presented to *Alpha Iota* chapter at Mississippi State University and the Most Improved Chapter award went to *Psi* chapter at University of Central Missouri.

Alpha Iota has consistently been an honor chapter with high visibility on campus and involvement in numerous service opportunities both on campus and in the community. These projects ranged from cleaning area streets, to mentoring local children and building a house. The mentoring program called Project AIM, required members to dedicate one hour a week to spend time with one student from an area school. The hour consisted of studying, playing, or just talking about ideas. Most of the children came from broken homes and the time they spent with their mentor was often their favorite time of the week. Members, also looked forward to this mentoring time as much as the students did. Last fall the chapter members, also, spent two Saturday mornings literally raising the walls of a Habitat home. It was such a rewarding project that the chapter decided to participate in two more Habitat projects in the spring. Other projects during the year included

participation in a Halloween carnival, Operation Christmas Child, bingo at a local nursing home, The Big Event, and working with Big Brothers Big Sisters. Through the chapter's participation in all these projects a new record was set for service hours completed by *Alpha Iota*!

Although *Psi* chapter's membership has been low the past couple of years that did not hinder the chapter from having a successful year in 2008-09. The chapter's focus was on participating in meaningful projects and increasing their

membership during the membership selection process. They were successful with both goals. Throughout the year the members collected over 200 canned food and dry goods for a local pantry, donated more than 40 book sets to the local Adult Abuse Survival House, and made fleece blankets for Big Brothers Big Sisters. In order to be successful in sponsoring these events the chapter sponsored two fundraisers. A table was set up during the

homecoming parade to sell coffee, hot chocolate, biscotti and granola bars. Next a leaf-raking project was held. This project was scheduled for two days and in spite of the cold and snowy weather the project was successful. The *Psi* chapter worked extremely hard last year to rebuild the chapter and heighten awareness on campus in order to continue the legacy of Lambda Sigma at UCM. ♦



New Awards – (left to right) president of *Psi*, Curtis Beasley and president of *Alpha Iota*, Hannah Rachel Carbin.

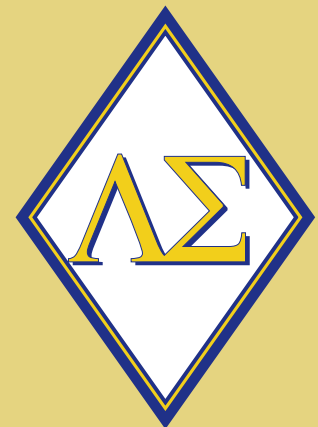
Scholarship Donation Challenge

Listed below are the chapters who donated to the scholarship fund last year. These chapters challenge all other chapters to make contributions during the 2009-2010 school year. Congratulations to these chapters!

\$250 ♦ Diamond Level
Rho

\$150 - \$249 ♦ Gold Level
Alpha Zeta

\$100 - \$149 ♦ Blue Level
Zeta
Alpha Delta
Alpha Theta
Alpha Kappa
Alpha Lambda
Alpha Pi
Alpha Omega
Beta Gamma
Beta Delta
Beta Eta
Beta Kappa ♦



Chapter Presidents Convene in Pennsylvania

This year the Lambda Sigma presidents traveled to Pittsburgh on October 16th for a weekend of learning, sharing, and fun at the 2009 Presidents' Conference.



Sara Hannah speaking at the closing banquet.

Friday night began with a pizza party followed by ice breakers and get-to-know-you games. The presidents then participated in a community service project included filling Halloween bags with candy and making cards for a local children's charity.

Saturday morning began with an opening session and role call. Next the board correspondents met with their delegates to discuss membership selection, attendance policies, ideas for service projects and fundraisers, and other topics of interest. Student representatives discussed their roles and then students were asked to submit questions or topics of interest to be discussed in the afternoon session. After lunch students had an opportunity to go on a campus tour that included visiting the bridge named in memory of Randy Pausch, alumnus and former professor of computer science at Carnegie Mellon.

After returning from lunch and a campus tour Mark Shotwell led a question and answer session on topics that students had submitted. Then nominations for



Sam Rigotti speaking at the closing banquet.

the student representative position were taken. After brief talks by the candidates votes were taken with the result announced at the banquet. Finally, presidents watched a brief segment of an Oprah interview with Randy Pausch and heard from CMU student and conference chair, Amanda Davenport, who attended Pausch's last lecture. The session ended and everyone returned to the hotel to relax before the final banquet.



Ron Wolfe discussing annual reports.

The banquet began with special entertainment provided by an Eta member, Roberta Sefcik, who played the bagpipes in full Scottish attire. Recognition was given to all chapters who received honor chapter status this past year. Other awards presented included the Ruth Knight Outstanding Advisor, Wendy Dahlgren, from Alpha Mu chapter; Most Improved Chapter, given to Alpha Epsilon chapter; and Outstanding Chapter, given to Alpha Iota. The outgoing student representatives, Sam Rigotti and Sarah Hannah, both gave inspirational speeches encouraging the delegates to make the most of their Lambda Sigma experience and leadership opportunities. At the conclusion of the banquet it was announced that the newly elected student representative, Justin Larsen, would serve on the national board for a two-year term.

After a quick change of clothes



Roberta Sefcik providing entertainment at the banquet.

the delegates returned for an evening in downtown Pittsburgh or just in small gatherings back in the hotel. It was a great way for the delegates to relax at the end of a work filled weekend and say goodbye to the friends they had made.

Sunday morning came early for most delegates as the van departed for the airport to take them back to their respective chapters with many new ideas in hand. ♦

"The Last Lecture"

"What wisdom would we impart to the world if we knew it was our last chance? If we had to vanish tomorrow, what would we want as our legacy?"

So begins "The Last Lecture," the national bestseller by the late Randy Pausch, alumnus and professor of computer science at Carnegie Mellon University, and his co-author, Jeffrey Zaslow. Pausch's brief but powerful book offers a series of "life lessons" from the vantage point of a man in his 40s who battled pancreatic cancer before his death in July 2008. Pausch's exuberant personality and determination to live life to the fullest despite his grim prognosis also have been witnessed in a popular YouTube video seen around the world since the "last lecture" was given at Carnegie Mellon on September 18, 2007.

Pausch's wisdom is both practical and inspirational. For example, he writes of realizing your childhood dreams, empowering others, expressing gratitude, "getting in touch with your crayon box," and "being the first penguin." Many "gems" are embedded in the pages of the book that can help us become better student leaders, teachers, advisors, and human beings.

Because the 2009 Lambda Sigma Presidents' Conference was hosted by our chapter at Carnegie Mellon in

Alpha Kappa Georgia Institute of Technology

To promote leadership and service among undergraduate students, the *Alpha Kappa* chapter of Lambda Sigma is proud and excited to be partnering with the Georgia Tech's College of Management to host the Ideas to Serve competition. This competition is designed to encourage social entrepreneurship, or entrepreneurship for the good of society. Contestants will first devise innovations that will have a positive, philanthropic impact on society, the environment, or both, and then they will develop plans turning their ideas into sustainable business ventures. The competition consists of a preliminary poster round and a final presentation round.

As a co-sponsor of Ideas to Serve, Lambda Sigma will be involved in all stages of the competition. The chapter has already orchestrated the marketing of the competition to the undergraduate student body in preparation for the kick-off introductory event this fall. Lambda Sigma will also be involved in choosing the winners for the competition. During the poster session, a committee of Lambda Sigma members will present an award to the most outstanding undergraduate team. For the finalist round, one member of Lambda Sigma will serve on the panel of judges to determine the overall winner of the Ideas to Serve competition.

The *Alpha Kappa* chapter is very excited for this opportunity to bring the idea of leadership in service to the undergraduates at Georgia Tech. We look forward to working towards the Ideas to Serve competition for the majority of the school year and eagerly anticipate the outcome.

Alpha Kappa is also proud to be developing the leadership and fellowship tenets by focusing especially on bringing freshman and sophomores into service and also providing services to these same groups. In the spring, we will be partnering with Omicron Delta Kappa, a upperclassmen honor society, to sponsor

a Georgia Tech Leadership Conference, which this year will have a heavy focus on helping freshman develop their leadership. We also hosted a freshman advisement day at the end of October to teach freshman the ins and outs of registering for classes. Often the freshmen do not learn about all of the third-party registration aids from Georgia Tech. We are very excited for what looks to be an excellent year of Lambda Sigma.

Lisa Thornsberry
Editor

Alpha Tau Honor Chapter University of Alabama

In Tuscaloosa, we are very excited to have been awarded honor chapter status and used this excitement as momentum to start an awesome semester. Even before our first meeting, we were spreading the word about the Lambda Sigma Society to freshmen new to campus, communicating to them the opportunities for heartfelt service and fellowship.

Committed to the idea that community service is not an event, but a lifestyle, we have implemented long-term partnerships with community-oriented organizations nearby. Each of our current members is now registered as volunteers with the local (West Alabama) Red Cross unit, taking opportunities as we are needed throughout the coming year. Also, we have been able to provide a month of service to the Boys and Girls Club and to the students that they serve. Each member has volunteered at least two hours during the month of October to academic tutoring, playing ball, and listening (a lot of listening!).

Forming relationships are the focus of our first year as an honor chapter – forming relationships with each other, with those in our community, and with the other organizations that aim to serve. We would love to hear ideas

from other chapters about forming relationships, as we feel that doing this now will allow our little corner of Lambda Sigma to be usefully present in the future.

Andrew Tuggle
Public Relations Co-Chair

Alpha Phi Ferrum College

The 2009-2010 members of the *Alpha Phi* chapter of Lambda Sigma started the fall semester and the new year of 2010 with a lot of new ideas and events for the organization. The members have worked hard to increase the treasury by hosting a Krispy Kreme doughnut sale, as well as informing prospective inductees about the honor society.

One of the most well known service events that occurs on the Ferrum College campus is Trick-or-Treat for Canned Goods. The members spent a lot of time in preparation and execution for this event. The group was in charge of the program and all that it entailed, including getting the word out into the community about donating cans, designating areas for other clubs to ask for canned goods, and taking the food collected to food banks. This project took a lot of hard work for each of the members to complete but they succeeded.

Other events and programs the group dedicated time to this school year were the 5K Panther Scamper with donations going towards the St. James Food Bank, Relay for Life with donated money going to Colleges Against Cancer to help with



our first community service activity of the semester we went trick-or-treating for canned goods. This project was done in conjunction with other honor clubs at Mansfield University.

As the semester goes by we are continuing to share and bring new and exciting ideas to the chapter. One of the biggest events we are planning is a fundraiser to sell Orange Crush sodas.

Finally as we move forward in the semester we hope to accomplish all of our goals and ambitions and to make our chapter the best it can be. We hope to make positive changes, leaving the chapter better than we found it for our future members .

Patience Bloh
Amanda Ward
Editors

Alpha Iota **Honor Chapter** **Mississippi State University**

Alpha Iota has made a large impact on campus this past fall. Our goals as a chapter are to increase community service, form new friendships, and keep a positive attitude flowing through Lambda Sigma and Mississippi State University. We meet bimonthly, every other Thursday, to discuss new service opportunities throughout the community. As the fall days have flown by, our chapter has grown closer, and it seems everyone is excited about new community service opportunities.

Our fundraiser has always been successful, and we are sure it will



continue to succeed. Our biggest service projects are Habitat for Humanity and Project AIM. Everybody loves to help out with Habitat for Humanity because it is a fun activity to do as a large group. This year Mississippi State is building the Maroon House; the idea spawned from a new reading initiative called the Maroon Edition. It is a first-year reading experience and the campus has really embraced the concept. The first book on the list was John Grisham's *A Painted House*. So, one of the projects accompanying the reading initiative is the Habitat house, with which Lambda Sigma has been able to help.



Project AIM, our second main service project, was created by a school teacher, and it is a mentoring program. Our members who are involved with AIM have been very enthusiastic about getting to know the children in the Starkville Public School District. They go to the child's school once a week to color, play, read, or just talk to their "special one." The children are considered high-risk – they might have a learning disability or discipline problems – so mentoring has been proven to make a difference in the children's lives.

At other times, we lend a hand to the Salvation Army – whether it's organizing

bags of clothes, stocking and organizing their food pantry, or just sweeping and cleaning. They appreciate all the volunteers, no matter the time or day! Among many other projects, we enjoy visiting a local nursing home and playing Bingo with the residents.

The past couple of years we have raised money by selling Krispy Kreme doughnuts. We sell a dozen doughnuts for five dollars, and we always sell out fast because it seems like a college student will never turn down a doughnut! Even better, we deliver them early in the morning for added convenience. This really helps our fundraising efforts, and, best of all, it is successful!



We are looking forward to the spring semester with new ideas, projects, and initiation. We are already excited about the selection process and interviews for the upcoming sophomores. Our high hopes and goals will eventually be passed onto them, but for now, we are happy in achieving all that we can in leadership, scholarship, fellowship, and service. As Anatole France said, "To accomplish great things, we must not only act, but also dream, not only plan, but also believe." We dream and believe that *Alpha Iota* and the other Lambda Sigma Honor Society chapters are truly making a difference in their communities and schools.

Kathleen Simmons
Editor

National Scholarship Recipients

Pittsburgh, many conference delegates had the opportunity to tour the campus and see the incredible new computer science building constructed with funding from the Bill and Melinda Gates Foundation. We also watched a brief segment of an Oprah interview with Randy Pausch and heard from CMU student and conference chair, Amanda Davenport, who actually attended Randy's last lecture in 2007.

Connecting the computer science building with a major fine arts facility is the Pausch Bridge, which was formally dedicated during homecoming weekend on October 30. (Lambda Sigma conference participants were able to see the nearly-completed bridge while at Carnegie Mellon October 16-18). It is truly a celebration of Randy's life and legacy, and moving tribute to one individual who continues to inspire millions make the most of their lives, no matter their challenge.

Lit by 7,000 energy-efficient LED lights, the Pausch Bridge delivers a powerful light show that is a constant reminder of Pausch's commitment to combining the arts and technology in his work. He continually reminded his students that even in dangerous waters, one penguin had to be brave enough to take the first dive. In its design, the bridge, with its abstract penguin cut-outs, recognizes all the "penguins" of the world. You can learn more about Pausch and the bridge dedication at www.cmu.edu/randys_lecture/bridge.html.

In honor of Lambda Sigma members everywhere – especially our conference host chapter at Carnegie Mellon – a contribution has been made to support the Pausch Bridge. This contribution designates us all as "Pausch Penguins," which aptly describes our sophomore leaders and scholars. As Pausch told his students, pursuing knowledge involves risk-taking and requires that we be "first penguins."

Denise Rode
National Recording Secretary ◆

The 2009-2010 national scholarship recipients are:
Lauren Richards, **John Yocca Scholarship**, from the University of Southern Mississippi; Katelyn Exler, **Pat Watt Scholarship**, from Thiel College; Alison Paden, **Emily Taylor Scholarship**, from Westminster College; Adam Snow, **Thyrsa Amos Scholarship**, from Georgia Tech University; and Aleese Kopf, **National Board Scholarship**, from University of Kansas.

A junior at Southern Miss, **Lauren Richards** is pursuing a major in elementary education. While maintaining a 3.8 grade point average, Richards is actively involved on campus, as well as in the community. She truly represents the tenets of Lambda Sigma. Her outstanding scholarship has resulted in selection in numerous honor societies. Her leadership is evident in the many organizations she serves. Richards has been active in Freshmen Associates, SGA Executive Cabinet, Eagle Connection, The Legacy, Luckyday Leadership Board, and Kappa Delta Sorority where she served as vice president of membership. As a Luckyday Citizenship Scholar, Richards is dedicated to service, actively involved in numerous volunteer opportunities, and she will continue to do so throughout her collegiate experience. In Lambda Sigma Richards served as the membership chair and always volunteered to assist with all projects. A Lambda Sigma member states, "Lauren is by far one of the most genuine and hard-working people I have had the pleasure of knowing. Her excitement for life and leadership is something that is obvious to all she meets. Most importantly, she is a woman of integrity who is respected by



Lauren Richards

her peers." Richards' involvement at Southern Miss resulted in her being the recipient of Outstanding Freshman Award last year. Upon graduation Richards plans to pursue a teaching position while furthering her education.

Katelyn Exler, from Thiel College, is a communication sciences & disorders major. She maintains a perfect 4.0 grade point average



Katelyn Exler

while participating in many organizations and activities both on and off campus. Exler's involvement on campus includes participation in the Thiel College Choir, Chamber Singers, Newman Society, Women Inspiring the Next Generation, and National Student Speech Language Hearing Association. She has also earned the Thiel Leadership Award, the Thiel Merit Award, and the Thiel Choral Scholarship. Her service is extensive, not only to the college, but also in the community and Lambda Sigma. Serving as ritual chair in Lambda Sigma she has fulfilled her duties, but more importantly, she has gone above and beyond her responsibilities. She was successful in increasing the profile of Lambda Sigma to the first year students and through her leadership she doubled the chapter membership. Caring about the values of leadership, service, fellowship, and scholarship, she led by example and was present at meetings and participated in all service projects. Currently she continues to serve Lambda Sigma as junior advisor. In a recommendation letter it states, "As a society we must reward people who stand above the rest embodying the essential qualities of honesty, integrity, reliability, accountability and academic merit and achievement. All of these are found in Katelyn Exler. Beyond these attributes I find one additional quality that is

refreshing in our culture. Exler does not seek attention or praise or outward notoriety, but rather has a quiet spirit that simply seeks to serve others.” Her career plans include pursuing a masters and doctorate degrees, eventually becoming an audiologist to work with children and adults with hearing and speech impairments.

Alison Paden has maintained a 3.76 grade point average while pursuing a degree in music education. Paden exemplifies leadership in all areas of her campus involvement



Alison Paden

whether it is through her music or as a member or officer in an organization. Her activities have included serving as a vice president for the Student Alumni Association, co-chair for the Campus Programming Council, secretary for the American Choral Directors Association, mentor in the Young Presbyterian Scholars, assistant music director for Chapel Drama, Habitat for Humanity, Students Against Destructive Decisions. In Lambda Sigma Paden has served as secretary. Her exceptional grades and academic achievements demonstrate her outstanding scholarship. She devotes countless hours to faithfully serving those less fortunate. During spring break she traveled to the hurricane stricken gulf coast to rebuild houses exemplifying her dedication to service. Her positions held in numerous organizations indicate her unique gift of leadership, and her commitment to her relationships with those around her demonstrate her exceptional fellowship. Paden’s career plan includes becoming a music educator and molding the younger generation of musicians. As a music educator she hopes to construct a program that nurtures students and empowers them to achieve more than they ever imagined.

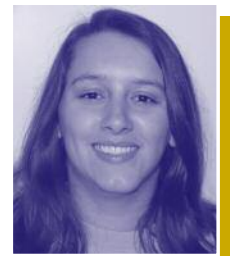
Adam Snow's involvement at Georgia Tech also exemplifies the four pillars of Lambda Sigma – leadership, scholarship, service, and fellowship. While



Adam Snow

pursuing a major in aerospace engineering he has maintained a 3.55 grade point average and has been actively involved in many activities. He served as service chair for Lambda Sigma, chair of the new member service committee, and chair of the Presidents’ Conference service committee last year. Under his leadership his chapter has worked with The City of Refuge which helps people in one of the poorest areas of Atlanta, helped refurbish a playground and park, provided Thanksgiving dinners for over a 100 families and aided a program which targets the sex trade, a huge business in Atlanta. Snow’s passion is for service and it is indicative by the way he serves others. While most college students spend their Friday nights at parties, Snow volunteers with the program mentioned above that works to free woman from the sex-slave industry. Many students do not know how to interact with the homeless, but Snow consistently volunteers with a homeless service organization. He knows how to be a friend to the under-privileged by dropping off food and getting to know men on the street. Snow is a role model of someone who really cares and has concern for others less fortunate than himself. This past summer he spent two months in Africa with a group which worked with the poor in that country. His other involvements on campus have included Sigma Chi Fraternity, Campus Outreach, Connect with Tech, Midtown Community Church at Tech, and College Ambassador. Upon graduation, Adam plans to pursue his interest in vocational ministry, possibly abroad. Evidentially, he plans to return to school for a graduate degree before beginning a career in space craft design.

Aleese Kopf, a sophomore at the University of Kansas, is a journalism, Spanish, and international studies major with a 3.82 grade point average.



Aleese Kopf

Volunteerism, leadership, and academic success are truly part of her everyday life. She actively volunteers with the Center for Community Outreach in a variety of programs, has taken part in the Alternative Breaks programs traveling to Lakeshore, Mississippi to rebuild homes after Hurricane Katrina and to Tucson, Arizona to provide humanitarian aid to migrants who were dying on the U.S.-Mexico border. After those experiences Kopf decided she wanted a larger role in the program and now is the director of the Alternative Breaks organization. She also co-coordinates the program Mentors in the Lives of Kids. Her other involvement on campus includes Board of Class Officers, Dole Institute of Politics Student Advisory Board, Society of Professional Journalists, 2008 Freshman Leadership Council, and Jubilee Café volunteer. A fellow Lambda Sigma member states, “Clearly, she is a one-of-a-kind leader and student, dedicated to serving others and giving of her time for the improvement of her university, her community, and her world. Her humility and desire to serve for the sake of serving are truly unique.” Currently, Kopf is studying abroad at la Universidad Catolica de Argentina in Buenos Aires, Argentina. After graduation Kopf aspires to become and international journalist and Latin America correspondent for the Associated Press. ♦





we stand for. Our main service project for the year was our John Barr in A Dress Week benefiting Habitat for Humanity. After much persuasion by our advisor Ms. Barbara Ross and our community service chair, Virginia Little, our fearless leader, President John Barr, finally agreed to wear a prom dress around campus one hour for every one hundred dollars that we were able to raise. This money will go to a Habitat for Humanity project for one of our own staff members, Ms. Melissa Carpenter, who lost her home during Hurricane Katrina. All week Lambda Sigma members took donations at a booth set up outside of our dining facility. We handed out Lambda Sigma brochures and answered many questions about this Habitat project and the Lambda Sigma organization itself. Thankfully we were able to raise over \$500 for Ms. Carpenter and this event helped bring our campus and our Lambda Sigma group closer together. We appreciate all donations from board members and other chapters and the hard work put in by our Lambda Sigma members. We are all so excited about the rest of the year and the potential it holds. Who knows what John might be wearing next?

**Virginia Little
Service Chair**



**Alpha Gamma
Honor Chapter
Duquesne University**

The 2009-2010 *Alpha Gamma* chapter began the year by greatly impacting its community through service, and has the high energy and dedication needed in order to continuously make a difference throughout the year. As Duquesne University is located in downtown Pittsburgh, service possibilities are endless. This chapter started the year with its participation in the Leukemia & Lymphoma Light the Night Walk. Also this chapter has participated in an Up 'Til Dawn letter writing event that focused on raising funds for St. Jude. As the year progresses, more and more service activities will be supported as they become available. Soon this chapter is planning on dedicating their time to support the local food pantry during their busy Thanksgiving holiday. *Alpha Gamma* is also anticipating its involvement in activities such as: shipping of medical supplies through Global Links, compiling activity kits for Children's Hospital, partaking in activities through Gilda's Club with individual's battling cancer, and also planning a clean-up trip around areas in the city. While the majority of *Alpha Gamma's* impact may be on the local level, the chapter is confident that their open support for these foundations will make a difference globally.

Even though the chapter's participation is primarily community centered, the chapter is dedicated to making a difference on campus as well. Members assisted freshman on their infamously stressful move-in day. Members are also planning on helping the same freshmen become better acquainted with their school through Freshman Parent Weekend. Representatives from the *Alpha Gamma* chapter serve on the food service committee, providing the missing link between students and their food provider. Also representatives serve on each one of the University's dean advisory committees where once again they provide an instrumental link between the school administrators and the student body.

While it is true that *Alpha Gamma* is fully dedicated to service, they still find time to have fun! *Alpha Gamma* began the semester with a back to school luau where the group spent time getting to know each other and relaxing before classes became too intense. *Alpha Gamma* also held a cookie baking party where the group was once again able to become a tighter society.

Thus far *Alpha Gamma* has truly been hard at work in their community and school. The *Alpha Gammas* are a tight knit society that is sure to have a tremendously successful and fun-filled year!

**Molly Beahr
President**

**Alpha Epsilon
Honor Chapter
Mansfield University**

Alpha Epsilon members at Mansfield University returned this fall ready to do what we do best, which is helping both the students and the community. We are starting the semester strong, welcoming new members and planning a variety of fun activities for the semester. We are setting high goals and encouraging our members to demonstrate good leadership. Our goal and focus for this semester is to make Lambda Sigma a well known and recognizable organization on campus, by working hard and giving our best effort.

We started the semester by inviting Mr. John Hauser from the national board to discuss group membership. His advice was to focus on recruitment for next year by increasing awareness of Lambda Sigma on campus.

Other activities we hosted were a movie night, a trip to Darien Lake, and a Halloween event. We encouraged our members to come out and have fun by meeting and getting to know other members of the chapter. The event was a huge success! Next we went to Darien Lake for a day of activities. For



Chapter News

Lambda Honor Chapter Westminster College

Everything is in full swing at the *Lambda* chapter in New Wilmington, Pennsylvania. Advisors, officers, and members are in full cooperation for our semimonthly meeting and are ready to make their presence known both on campus and in the community. To increase morale and fellowship within our chapter, we have been ending each meeting with a quote of the day to inspire members to be better people both inside and outside of the classroom.

We have started the year by personally welcoming all freshmen to Westminster College. This is one of the largest freshmen classes in school history and members of Lambda Sigma sent letters to each first year student. The letter welcomed each student to the college, explained the goals of Lambda Sigma, and expressed our willingness to answer any questions that may have during the first year of school. The letters were well received and the freshmen truly appreciated the generous welcome.

Our other big event on campus, not only for Lambda Sigma, but for the whole school, was homecoming! The *Lambda* members were in full force for



the festivities. To start the homecoming week, members made and hung a large banner in the student union, wishing everyone a happy homecoming and wishing the best of luck to all candidates from Lambda Sigma. On the actual day of homecoming, members were busy early in the morning decorating the campus by blowing up balloons and placing them in key points around campus. Another large task was decorating for the 20th Reunion Luncheon for returning alumni.

Lambda Sigma, also, participated in the Make a Difference Day on Westminster's campus. On this day, members picked up litter on campus and the surrounding area. This not only made Westminster look great, but helped the environment as well. Another service project we arranged was visiting a local nursing home and taking the residents goodies!

This semester, Lambda Sigma is continuing with our lucrative fundraiser, Lil' Hug Sale. Students will be able to purchase a "little hug" juice bottle and send the "hug" to their friends and loved ones through campus mail. This not only brightens the day of the person to whom they are sent, but raises awareness of our honor society. Nothing seems to brighten someone's day more than a hug!

Thus far the *Lambda* chapter at

Westminster College has been very busy during the fall semester! We are extremely proud of the work we have completed so far, and we are excited about our upcoming events on campus and in the community! Good luck to all fellow Lambda Sigma chapters!



Lexie Elliott
Secretary

Rho Honors Chapter Thiel College

The *Rho* chapter of Lambda Sigma at Thiel College has high expectations for both the fall and spring semesters. Like many before us, we are dedicated to the four tenants of scholarship, leadership, fellowship, and service, for which Lambda Sigma stands, and we plan to incorporate each of these tenants throughout the year to help our school and our community.

Upon returning to Thiel, we began organizing weekly meetings in order to arrange projects that would occur during the semester. The first fundraiser is a birthday cake sale, which is scheduled to take place throughout this and next semester. This project is meant to send cakes, ordered by parents, to students

who cannot be home for their birthdays.

Furthermore, in October, we participated in our first of two highway cleanups scheduled this school year. Even though it was cold, we made our best effort to make the area look beautiful. Also, during this month, we went around campus to raise money for UNICEF, an organization that helps children worldwide.

In November, we are organizing Teacher Appreciation Week. During this week, a teacher is selected by the student body to be recognized for his or her hard work and achievements. In addition, we are also organizing a t-shirt sale, which will be opened up to the entire student body and faculty.

This semester has thus far been a success, and we plan to keep up the hard work for the rest of the year. The *Rho* chapter of Lambda Sigma has always and will always strive to the best of our abilities to not only adhere to the principles of Lambda Sigma, but to aid the community in any way possible.

Erica Marie Rinehart
Editor

Chi **Louisiana Tech University**

The *Chi* chapter of the Lambda Sigma National Honors Society of Louisiana Tech University has directed our focus on community and school involvement. This year we have planned to become a part of 4 Paws, an organization that helps find families that are willing to take in homeless animals. This organization not only provides homes for animals, but also provides the excitement for children and families as they take in their new pet, and Lambda Sigma is proud to be part of such excitement. Besides community service, our chapter has also emphasized the importance of school involvement, and this year our society has already become involved in all of the homecoming week activities.

Some of these activities included Paint the Town, where society members went to various locations and businesses to paint their windows with school spirited sayings; Dunk Your Leader, where our Lambda Sigma vice-president, Clint Carlisle, sacrificed himself to be placed in a dunking booth while members took chances at dropping him in; Tower Stand, where one of our members, Dorian Long, stood at our school's clock tower for an entire afternoon while people dumped anything from ketchup to anchovies on him. We also participated in Dawg Hawl, which is an event to help move in students at the beginning of our fall quarter. While homecoming week and Dawg Hawl have been two examples of school involvement, we have planned many other activities to help build name recognition about the Lambda Sigma Honors Society around our campus.

To help aid financially in our community service projects and school involvement, we have planned two fundraisers. Our first was painting faces for our bulldog fans at our homecoming game. Our second was a night at Pizza Inn where our society members became waiters and waitresses to earn a percentage of the profit that night as well as all tip money. Our Lambda Sigma chapter has made a commitment to bettering our community and our campus, and we are confident that these activities will do just that. GO DAWGS!

Lauren McCalmont
Historian

Omega **Honor Chapter** **Pittsburg State University**

The *Omega* chapter of Lambda Sigma had a good jump start to the fall semester. With everyone being extremely busy already, we decided committees would be the best way to get work done this year, and we were right. We had a Halloween party for the Intensive English students and it was enjoyed by everyone. For many of these

students, it was the first time they ever experienced Halloween. We did everything from dressing up in costumes, to giving out candy, and also telling the story of how Halloween came about. Upcoming events include a car bash during finals in which students will pay money to take a sledge hammer to a car! Not only will this raise money, but it will be a great stress reliever during those tough times.

Already, we have added \$500 dollars to our bank account by teaming with Sigma Sigma Sorority to sell programs at our university's football games. It was a great experience to collaborate with another organization, and the money will most likely be used to adopt a family at Christmas time. We are spreading the word about Lambda Sigma throughout the campus as well. One of our members was selected to run for Homecoming Queen this year. The results are not in yet, but we hope she wins.

The *Omega* chapter is already well underway this year, and is excited for all of the upcoming events. In the mean time we will all continue to build on a tradition of greatness.

Zach Krumsick
President

Alpha Delta **Honor Chapter** **University of Southern** **Mississippi**

This year our Lambda Sigma activities started early. First of all, we sponsored a care package event by sending letters to parents of freshmen. We invited them to write a note to their college student to insert in the care package which we would deliver to them. The Lambda Sigma members got together and stuffed the packages with food and a note from home along with other goodies and delivered them to the freshmen. This was a way for us to raise money for the year, and to get the word out to freshman about Lambda Sigma and what